

Nebraska Statewide Mobility Management Project



MARCH 2016

Contact Information

NDOR Project Manager

Kari Ruse, Transit Liaison Manager
1500 Highway 2
Lincoln, NE 68508
Kari.Ruse@Nebraska.gov
402-479-4694

SRF Project Manager

Bill Troe, Principal
11422 Miracle Hills Drive
Suite 315
Omaha, NE 68154
Btroe@SRFConsulting.com
402-513-2158

Definition of Mobility Management

A strategic approach to service coordination among transportation providers to create a full range of transit services

Welcome

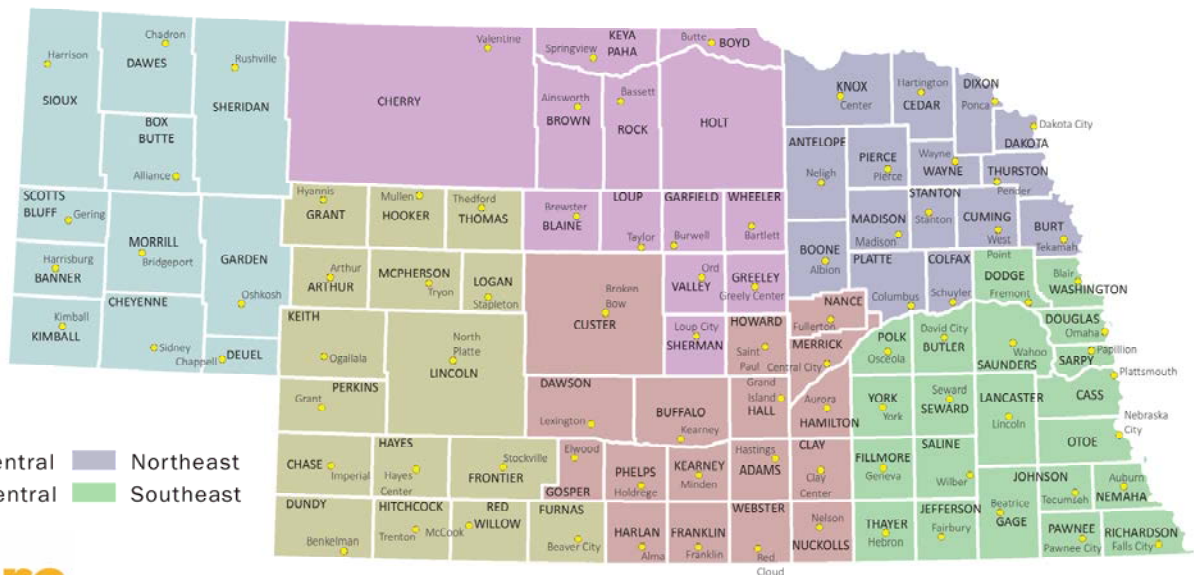
The NDOR, along with a broad range of partnering agencies, has initiated the Mobility Management Project with the goal of improving travel options for residents and visitors of the state. Currently, there are 13 counties in the state without any public transportation service and another 13 counties without rural area service. Through this statewide approach to addressing mobility needs, it is anticipated that alternatives that fill in service gaps can be identified and implemented.

This is the first of a series of newsletters to be distributed throughout the course of the eight to 12 month project. You can also visit the Nebraska public transportation website (www.nebraskatransit.com) to get current information on the work progress.

Region Development

A central element of the project is investigation of the benefits and feasibility of organizing travel management into six regions across the state. Creating regions has usefulness in both the stage of conducting the present project by creating more manageable areas over which needs will be defined, alternative improvement strategies will be defined and evaluated, and potential changes to services and oversight of the services will be documented. Following completion of this project, the regional concept can provide a structure for implementation and on-going management is provided.

For the project, the team has organized the state into the six regions displayed in the attached figure. These regions take into account the boundaries of the current multi-county transportation agencies and the general service areas of county and community-based transit agencies.



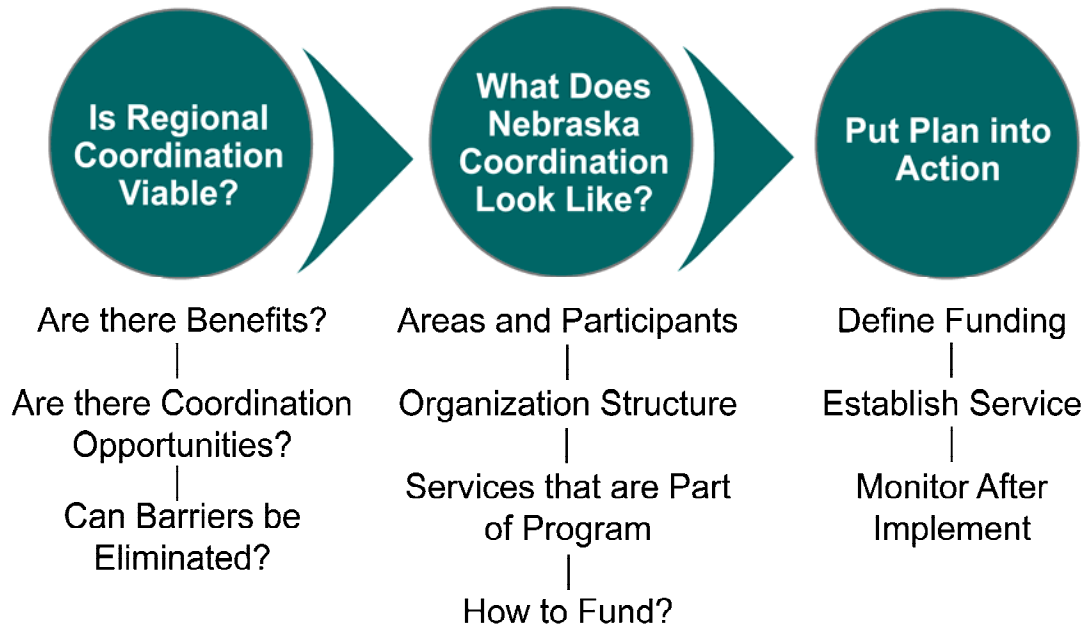
Legend

- Panhandle
- Southwest
- North Central
- South Central
- Northeast
- Southeast



Project Steps

Over 8 to 12 months the NDOR and a range of project partners will identify, assess, and prepare an implementation plan for transforming the current relatively disconnected public transportation programs into a more integrated/coordinated system. The steps anticipated for the project are shown in the attached figure.



Mobility Needs and Gaps to Address

In the last 10 years the NDOR has conducted a series of statewide studies that included a task of identifying travelers needs and those that could be, but are not, addressed through intercity, regional, and local service within the state. A primary goal of the Mobility Management Project is to identify service and organizational strategies to address the range of gaps identified through the earlier work.

Mobility Needs and Gaps to Address

- Regional Center Service:
 - Medical
 - Shopping
 - Social/Recreation
 - Airports/Amtrak
- Finding/Keeping Drivers
- Weekend Service
- Extended Hours:
 - Earlier in Morning
 - Later in Evening
- Marketing – Service is for All
- Provide School-related Trips
- Rider Guidelines
- More Funding:
 - Operations
 - Capital
- Technology – Lacking Today
- Trips Supporting Work (Commute)
- Inter-Agency Communication
- Maintenance Staff
- Lack of Coordination – Inter-agency
- Training (Rules and Regulations)