

NEBRASKA MOBILITY MANAGEMENT PROGRAM AND COORDINATED TRANSPORTATION PLAN

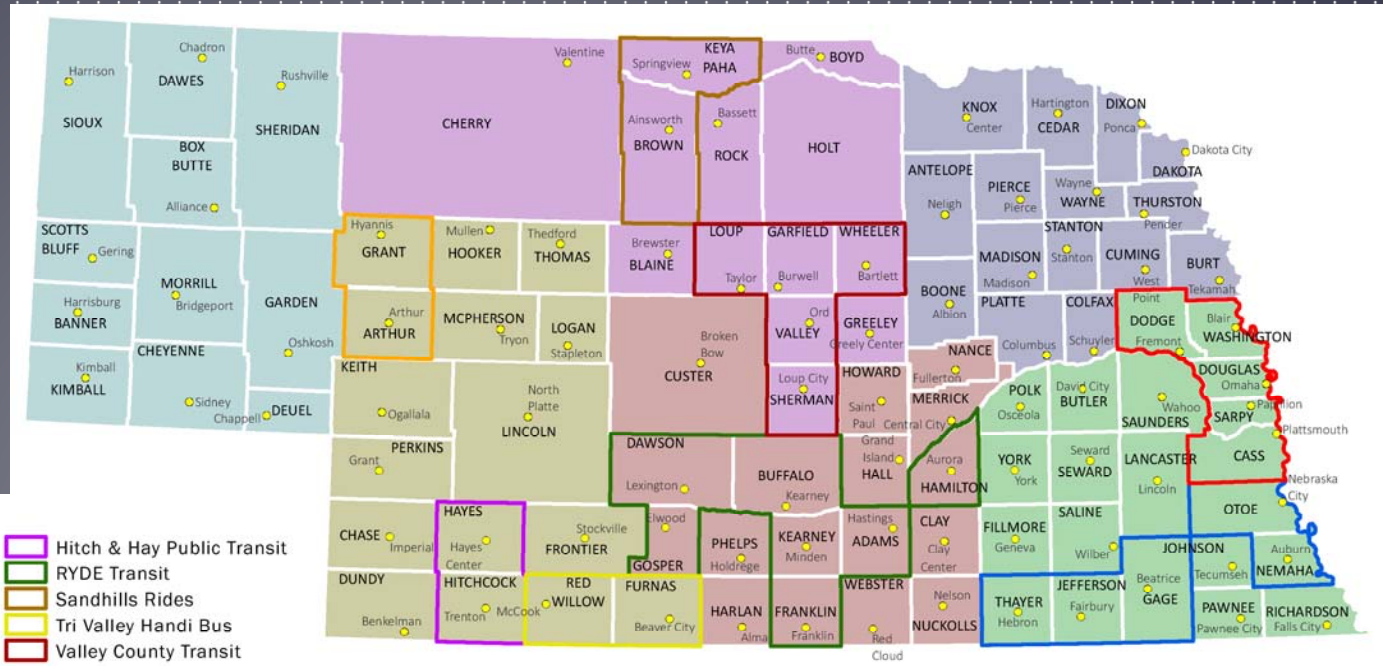
Regional Committee Meetings #3
October-November 2016



AGENDA

- ▶ Introductions
- ▶ Regional Structure:
 - ▶ Areas
 - ▶ Goals
 - ▶ Roles and Responsibilities
 - ▶ Organization Alternatives
- ▶ Mobility Managers
 - ▶ Roles/Responsibilities
 - ▶ Is there a Need?
 - ▶ Q/A - Discussion
- ▶ Status Update:
 - ▶ Regional Strategies
 - ▶ Pilots
- ▶ Wrap Up

PROPOSED REGIONAL BOUNDARIES



Legend

- | | | |
|--|---|---|
| Panhandle | Multi-County Providers | Hitch & Hay Public Transit |
| Southwest | Blue Rivers | RYDE Transit |
| North Central | ENOA | Sandhills Rides |
| South Central | Grant Arthur Handi Bus | Tri Valley Handi Bus |
| Northeast | | Valley County Transit |
| Southeast | | |

REGIONAL COMMITTEE - GOALS

- ▶ Create Means of Continuing Regionalization Conversations:
 - ▶ Outside NATP Meetings
- ▶ Grow Coordination
- ▶ Bring Unserved Areas to the Table
- ▶ Streamline NDOR/FTA Communication (Discussion):
 - ▶ Committee as Conduit between Agencies and NDOR?
 - ▶ Training Clearinghouse

POTENTIAL COMMITTEE REPRESENTATION

Members

- ▶ Public Transit Agency
- ▶ Elected Official/ Administrator:
 - ▶ Community Action Agency
 - ▶ Medical Center
- ▶ Tribal Government
- ▶ VA
- ▶ NATP

Affiliates

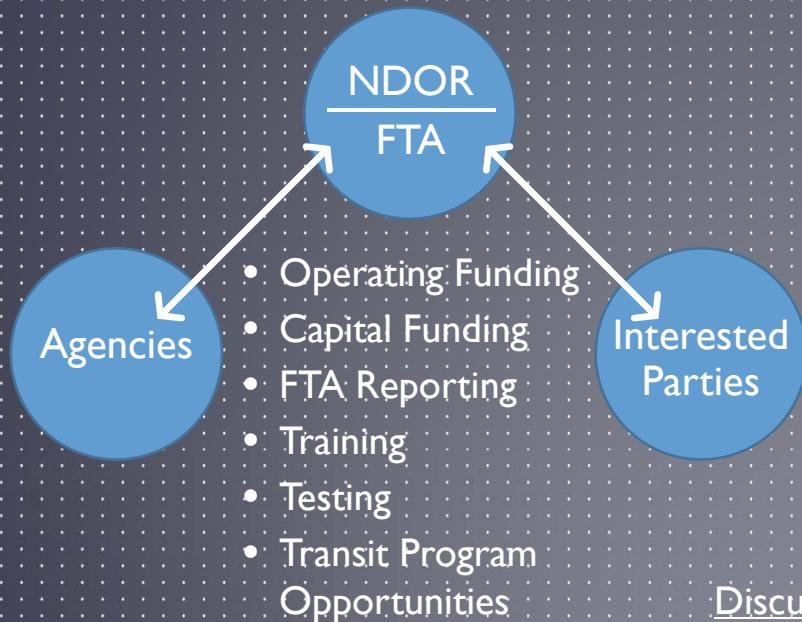
- ▶ Officials/Administrators – Areas Without Service
- ▶ Major Employers-Economic Development Agencies
- ▶ Intercity Bus Operator
- ▶ Non-Profit Agencies (5310 Recipients)

Discussion Item

- Are Groups Missing?

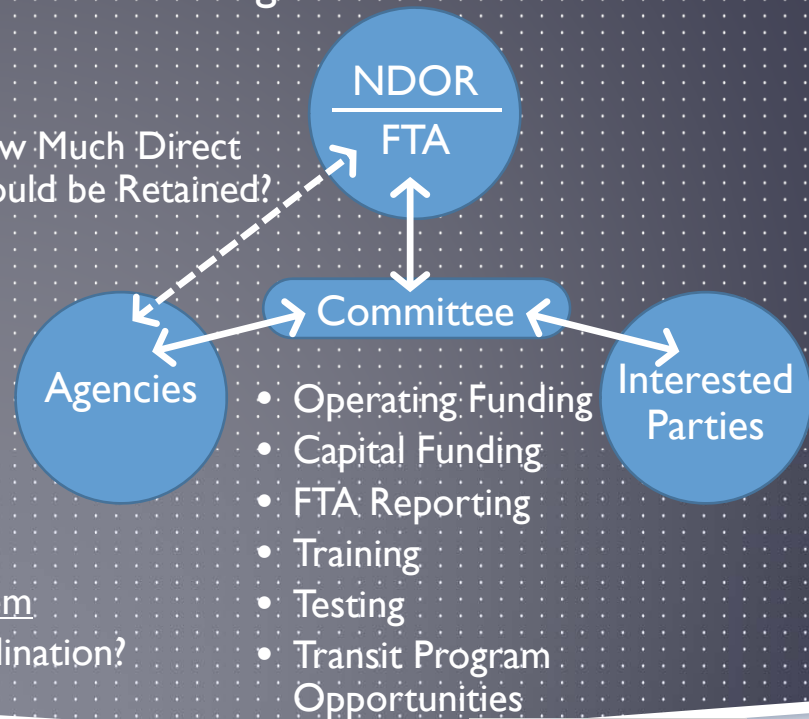
NDOR/FTA COMMUNICATION

Current Communication



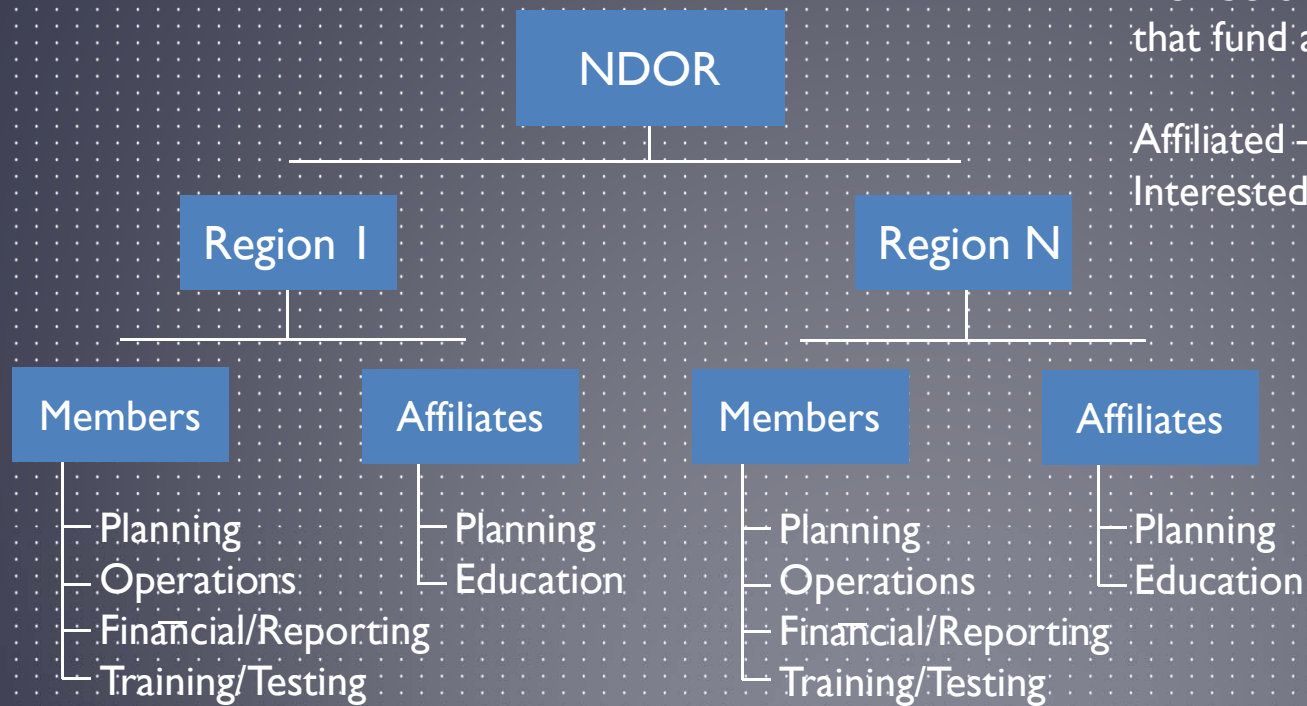
Communication with Regional Committee

How Much Direct Should be Retained?



Discussion Item
NATP Coordination?

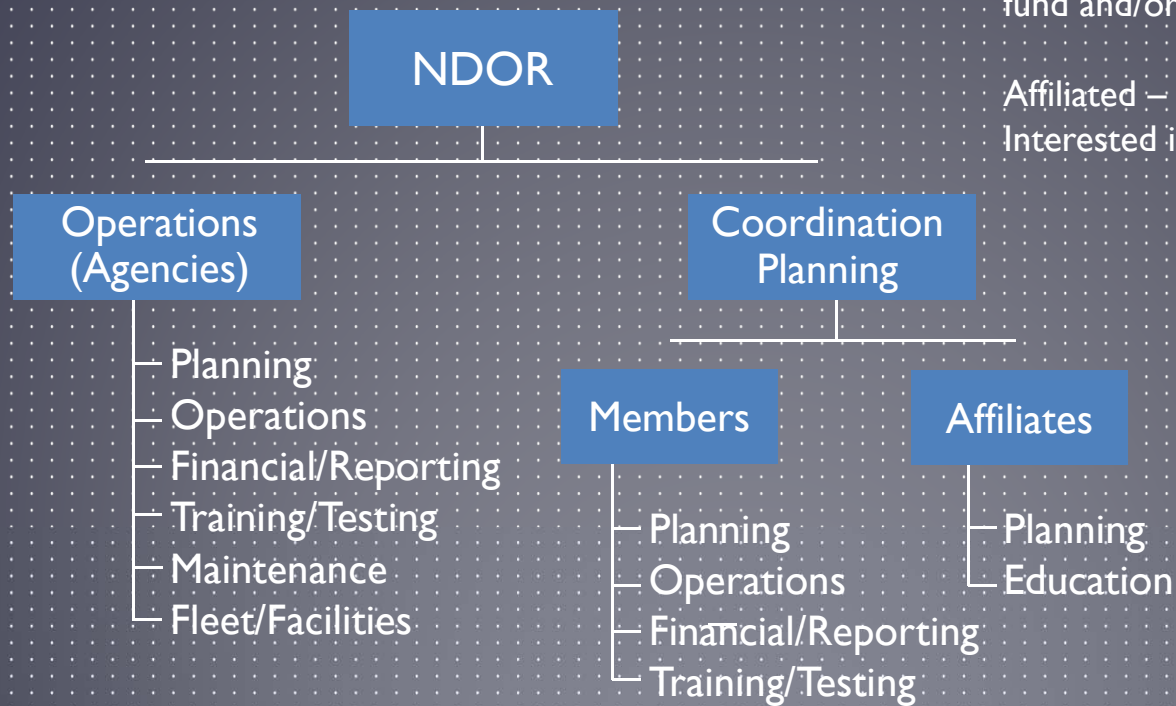
ORGANIZATION OPTION A



Members – Organizations/Jurisdictions that fund and/or Provide Transportation

Affiliated – Organizations/Jurisdiction Interested in Providing Transportation

ORGANIZATION OPTION B



Members – Organizations/Jurisdictions that fund and/or Provide Transportation

Affiliated – Organizations/Jurisdiction Interested in Providing Transportation

MOBILITY MANAGER - RESPONSIBILITIES

- ▶ Trip Planning Assistance
- ▶ Travel Training New Users
- ▶ Implement Coordination Ideas/Strategies
- ▶ Develop New Coordination Ideas
- ▶ Liaison between Local Agencies and NDOR
- ▶ Outreach:
 - ▶ Between Agencies
 - ▶ Public to Strengthen Brand
 - ▶ New Partnerships
- ▶ Promote Transportation Services

MOBILITY MANAGER

- ▶ Funding for Position:

- ▶ 80% Federal
- ▶ 10% State
- ▶ 10% Local Match

- ▶ Additional Discussion Items:

- ▶ Is the Position Needed in All Regions?
 - ▶ Full Time
 - ▶ Part Time
- ▶ Options for Acquiring Staff:
 - ▶ Solicit Proposals – Including from Current Agencies
 - ▶ Regional Committees Hire
- ▶ Where are They Located?

STATUS UPDATE - STRATEGIES AND PILOTS

- ▶ Add Slides
- ▶ Tree Suggestion – Create Table that Summarizes

SERVICE STRATEGY DEVELOPMENT STATUS

Location	Strategy	Status	Pilot
Dawson-Lincoln Counties	Add Regional Service from Lexington to North Platte: <ul style="list-style-type: none"> • 2 Trips Per Month • 3 Routing Alternatives 	<ul style="list-style-type: none"> • Completing Surveys in Maxwell and Brady – Demand Estimation • Held two meetings with potential partners 	*
Fullerton to Grand Island and Kearney	Provide added access to Grand Island and Kearney from communities along US 30 by adding stops. Trips are currently provided from Fullerton – No/Limited added cost.	Met with provider in Fullerton – There is support for concept Preparing schedule - fare	
Fullerton to Columbus	Provide added access to Grand Island and Kearney from communities along US 30 by adding stops. Trips are currently provided from Fullerton – No/Limited added cost.	Met with provider in Fullerton – There is support for concept Preparing schedule - fare	

SERVICE STRATEGY DEVELOPMENT STATUS

Location	Strategy	Status	Pilot
Throughout Region	Coordinate with RYDE Transit to be aware of inquiries they receive relative to adding locations to their network.	Periodic correspondence with RYDE Transit staff	
Throughout Region	Marketing enhancements to build transit for all brand and identify individual agency outreach/advertising	Preparing outreach concept to widen awareness of service. Coordinating with UNO – Templates available to agencies	

WRAP-UP

- ▶ Questions/Discussion
- ▶ Next Steps:
 - ▶ Regional Committees
 - ▶ Project
- ▶ Thanks

Public Information Meeting Schedule

- O'Neill – October 25
- Kearney – November 1
- North Platte – November 2
- Scottsbluff – November 3
- Beatrice – November 9
- York – November 10
- Norfolk – November 15
- Wahoo – November 16

CONTACTS

Kari Ruse

- ▶ NDOR
- ▶ Kari.Ruse@Nebraska.gov
- ▶ 402-479-4694

Bill Troe

- ▶ SRF Consulting Group
- ▶ btroe@srfconsulting.com
- ▶ 402-513-2158

NEEDS AND GAPS – WHAT WE HAVE HEARD

- ▶ Regional Center Service:
 - ▶ Medical
 - ▶ Shopping
 - ▶ Social/Recreation
 - ▶ Airports/Amtrak
- ▶ Finding/Keeping Drivers
- ▶ Weekend Service
- ▶ Extended Hours:
 - ▶ Earlier in Morning
 - ▶ Later in Evening
- ▶ Marketing – Service is for All
- ▶ Provide School-related Trips
- ▶ Rider Guidelines
- ▶ More Funding:
 - ▶ Operations
 - ▶ Capital
- ▶ Technology – Lacking Today
- ▶ Trips Supporting Work (Commute)
- ▶ Inter-Agency Communication
- ▶ Maintenance Staff
- ▶ Lack of Coordination – Inter-agency
- ▶ Training (Rules and Regulations)

MOBILITY MANAGEMENT GOALS/FEATURES

Goals

- ▶ Increase Travel Options:
 - ▶ Hours
 - ▶ Locations
 - ▶ More Hours
- ▶ Improve Efficiency
- ▶ Increase Cost Effectiveness

How

- ▶ Coordination:
 - ▶ Management/Administration
 - ▶ Providing Service
- ▶ Collaboration between Transit Agencies
- ▶ Consider Full Range of Services
 - ▶ Public
 - ▶ Private

PUBLIC TRANSPORTATION ELEMENTS

Every Agency Providing Service Does Most of These



PRIORITIZING NEEDS/GAPS

- ▶ Preference Voting:

- ▶  Most Important

- ▶  Second Most

- ▶  Third Most

- ▶  Fourth Most

- ▶ Place  Next to the Need you Believe is Most Important to Address -  At Second Most Important...